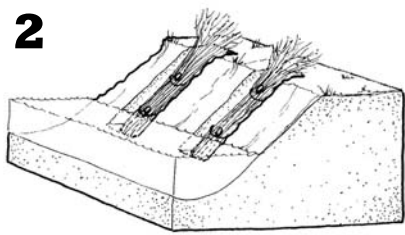
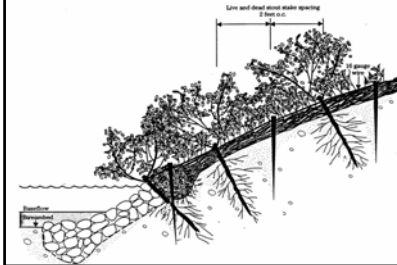
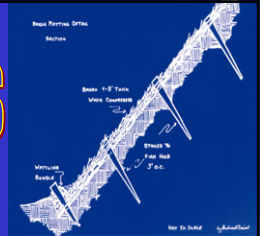


MORE BIOENGINEERING TREATMENTS

2



Brush Mattress

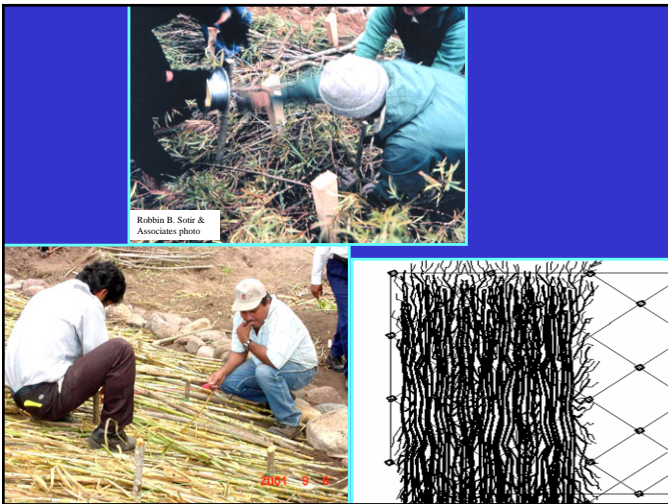


- Typically for stream banks
- Rapid immediate protection
- Traps sediment
- Labor intensive



Brush Mattress

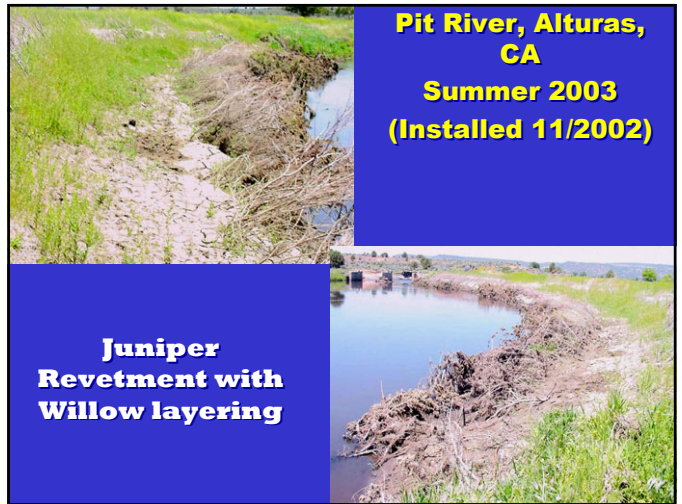
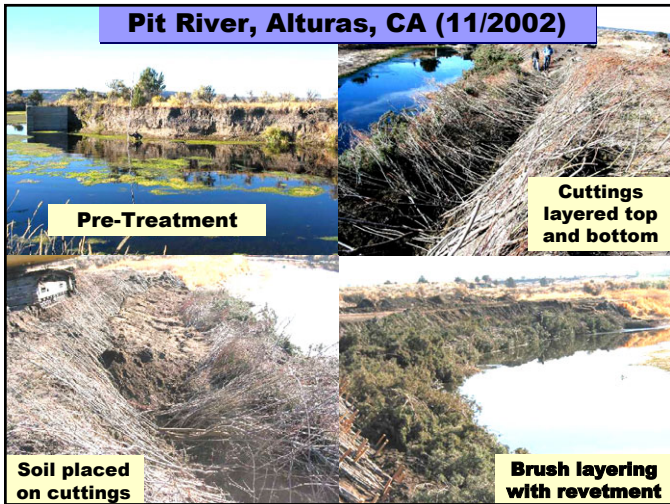
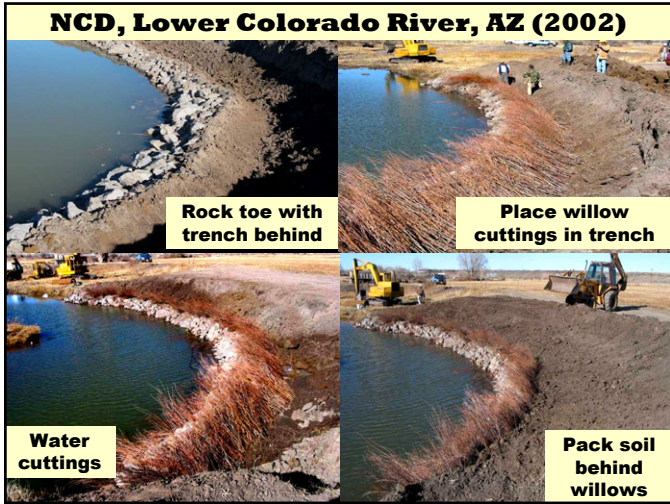




Robbin B. Sotir & Associates photo









BRUSH LAYERING to protect streambank excavations

Mary Jane Creek, Manitou, Manitoba, Canada

Place willow cuttings in trench.



Pack soil over the ends of the cuttings.

Place more willows in the trench on top of the other layers.

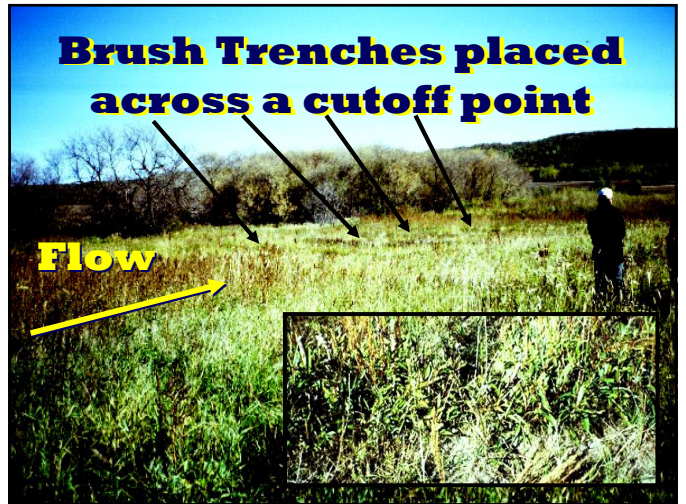


Pack soil layer on the cuttings.

Continue to alternate willows and soil layers to the top.

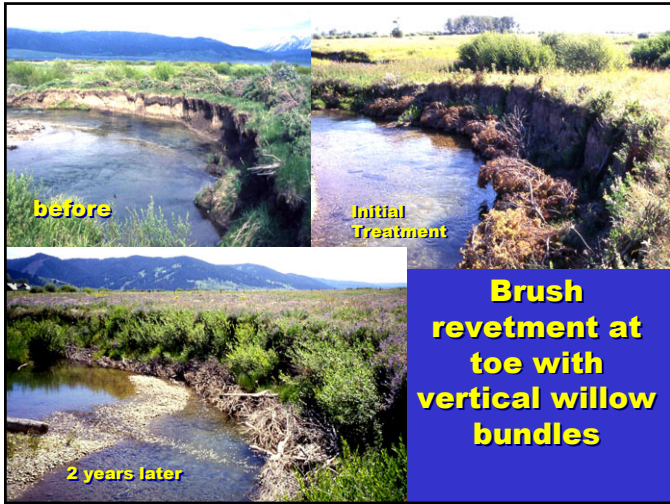


Finished Brush Layer









Anchor Model No.	Anchor Holding Power in Normal Soil	Wire Rope Length
40-DB1	300 lb	20 inch
68-DB1	1,100 lb	30 inch
88-DB1	3,000 lb	42 inch
138-DB1	5,000 lb	60 inch

Foresight Products
Note: should use load locker to proof anchor

DUCKBILL

Platypus

EARTH ANCHORS





Duckbills installed next to fence posts

Gripples used to lock Duckbill cables around willow bundles



Carson River 2002 Project