



Working Lands for Wildlife

Wildlife Habitat Financial Assistance Targeted for the Southwestern Willow Flycatcher

Stu Tuttle, State Biologist

Phoenix, Arizona

www.az.nrcs.usda.gov

stu.tuttle@az.usda.gov





“OLD” Wildlife Habitat Incentives Program (WHIP)

- ❖ **State Allocation**
- ❖ **State Ranking**
- ❖ **Fund projects state-wide, all species**
- ❖ **Extra points for T/E species of Concern**
- ❖ **AZ Funding range \$90,000 – \$1,700,000**
- ❖ **Ave ~ \$300,000**



Working Lands for Wildlife

- Partnership between FWS and the NRCS
- Voluntary, incentive-based
- Provide landowners with technical and financial assistance
- Provide landowners with regulatory predictability and sustainable operations
- Restoring and protecting the productive capacity of working lands
- Restore populations of targeted declining wildlife species



Lesser Prairie Chicken



New England Cottontail



Southwestern Willow flycatcher



Greater Sage-Grouse



Gopher Tortoise



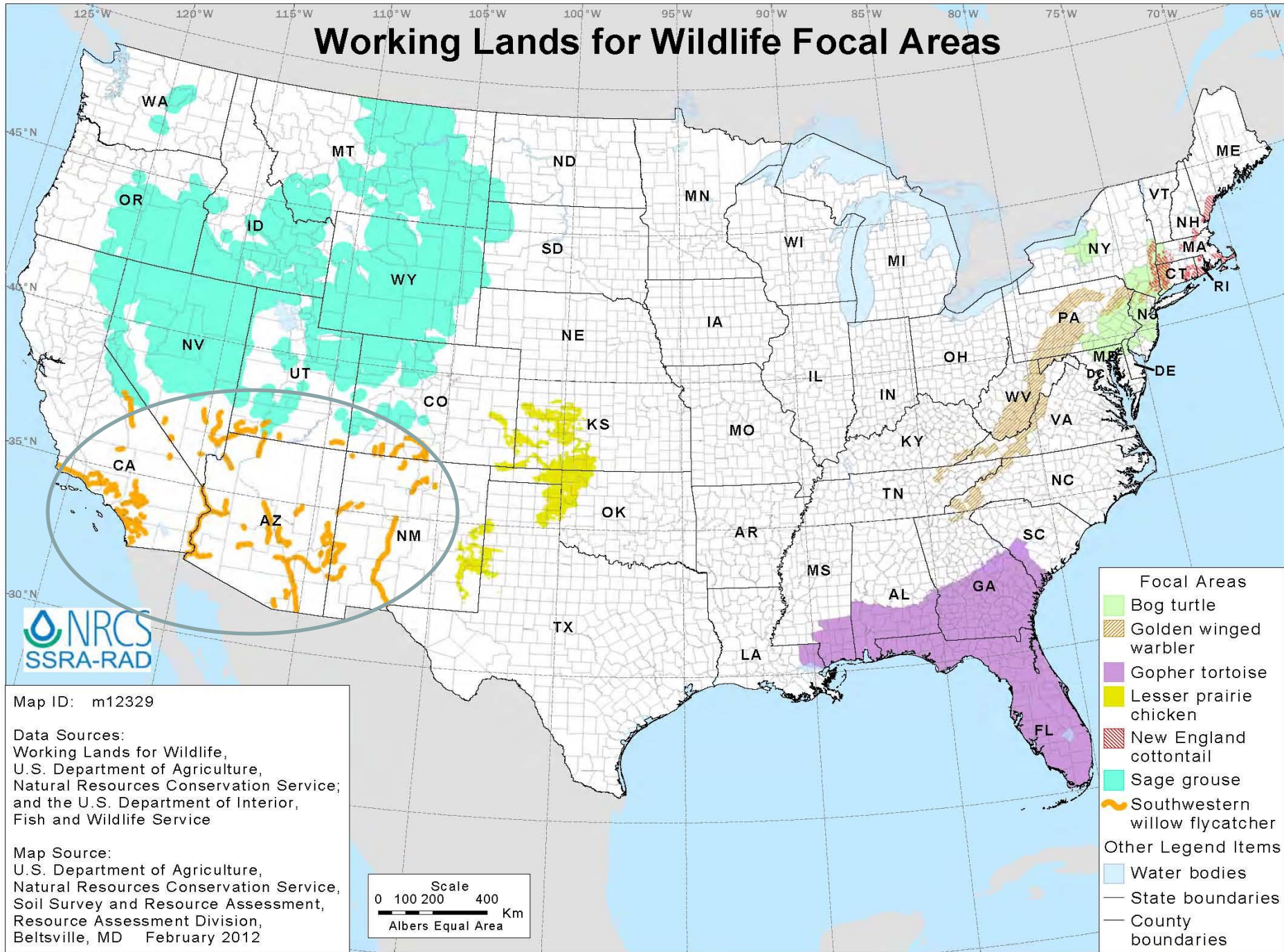
Bog Turtle



Golden-Winged Warbler



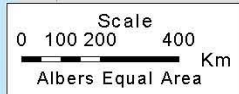
Working Lands for Wildlife Focal Areas



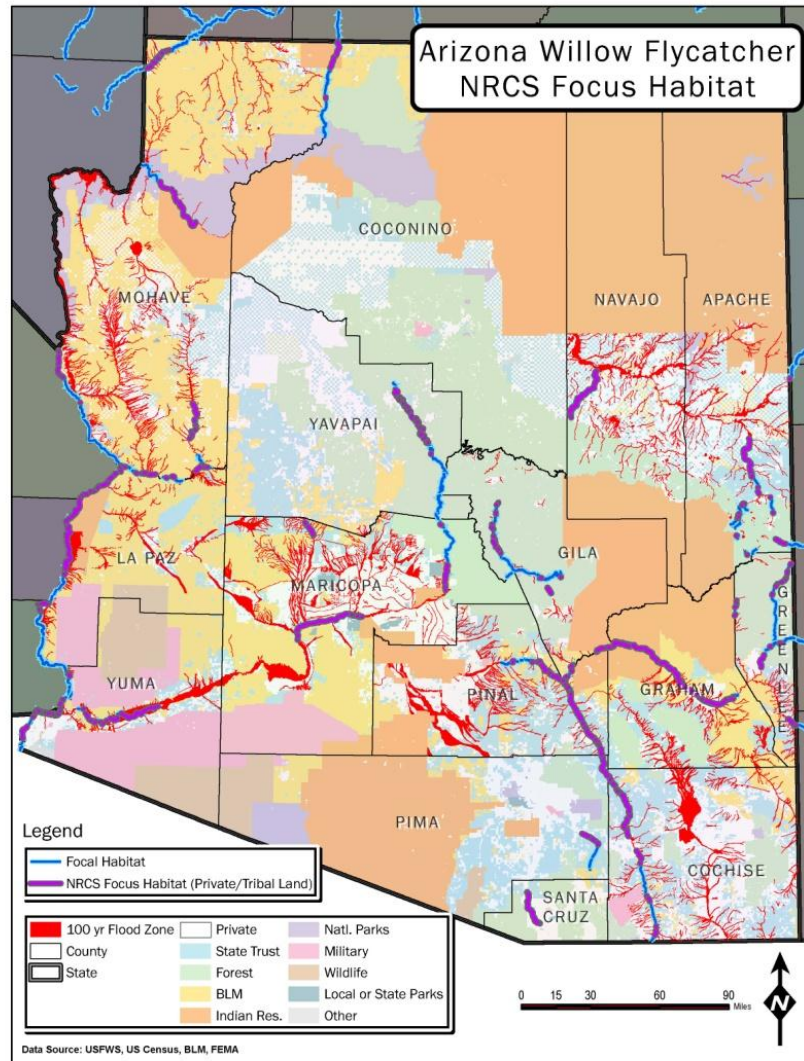
Map ID: m12329

Data Sources:
 Working Lands for Wildlife,
 U.S. Department of Agriculture,
 Natural Resources Conservation Service;
 and the U.S. Department of Interior,
 Fish and Wildlife Service

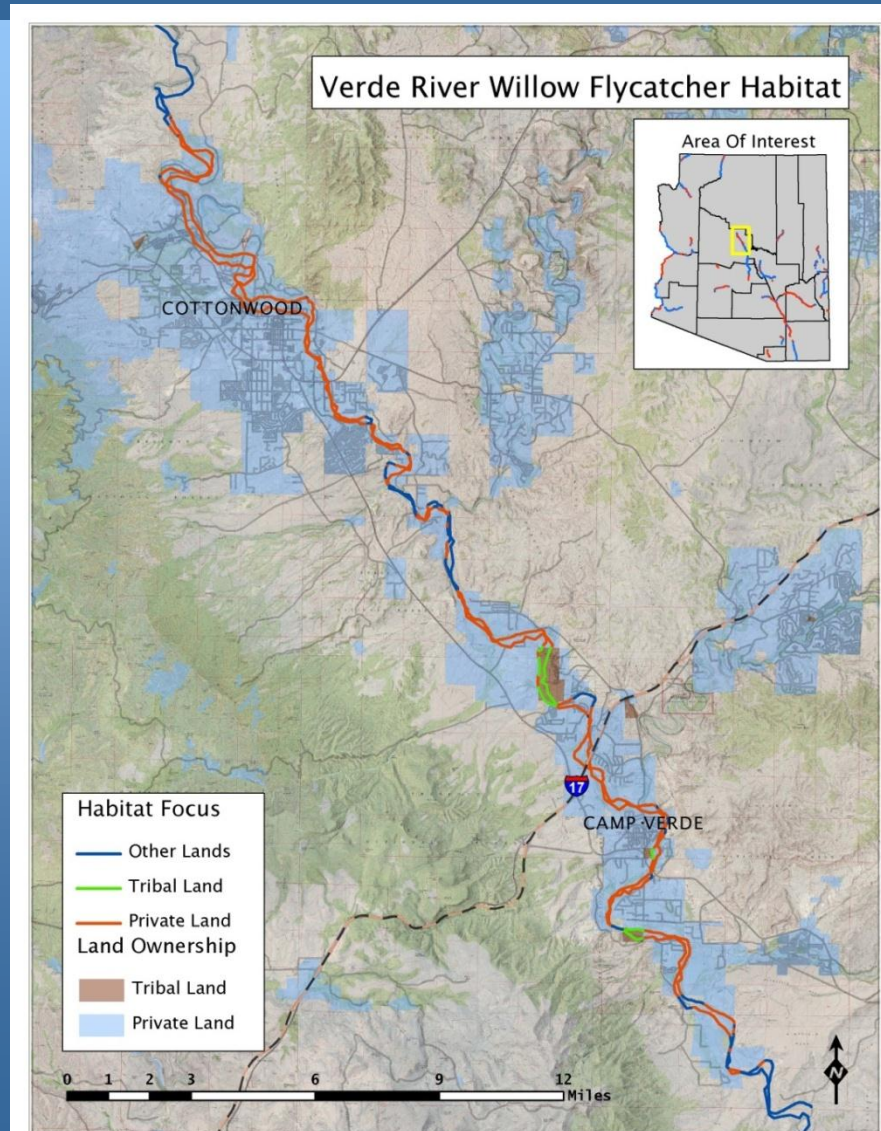
Map Source:
 U.S. Department of Agriculture,
 Natural Resources Conservation Service,
 Soil Survey and Resource Assessment,
 Resource Assessment Division,
 Beltsville, MD February 2012



- Focal Areas**
- Bog turtle
 - Golden winged warbler
 - Gopher tortoise
 - Lesser prairie chicken
 - New England cottontail
 - Sage grouse
 - Southwestern willow flycatcher
- Other Legend Items**
- Water bodies
 - State boundaries
 - County boundaries



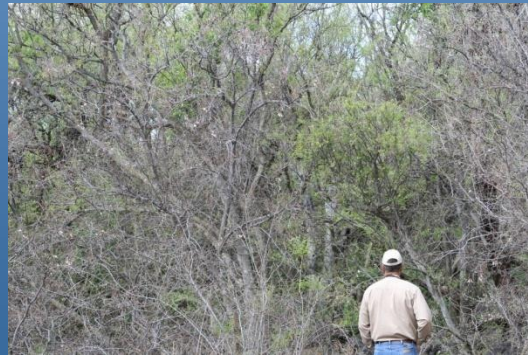
Example Focus Area Map



- Develop State Lists of Conservation Practices associated with each species**
- Identify Core and Supporting Conservation Practices that contribute to quality habitat**
- Condition Conservation Practices and Develop Conservation Measures**
- Develop State-Level Focus Area Maps**
- Develop State-Level Monitoring Plans**
- Consult with the Services as required by the ESA**
- List State Level Biological Opinions from USFWS, and other Programmatic Agreements**
- Identify Other Species Benefiting from Conservation Practices associated with this Project**

-for addressing riparian area resource concerns:

- Upland Wildlife Habitat Management**
- Wetland Wildlife Habitat Management**
- Stream Habitat Improvement and Management**
- Restoration and Management of Declining Habitats**



Supporting Conservation Practices installed with a core practice:

<i>CODE</i>	<i>PRACTICE</i>
314	Brush Management
315	Herbaceous Weed Control
327	Conservation Cover
349	Irrigation Water Management
382	Fence (livestock mgt within/near riparian areas)
386	Field Borders
390	Riparian Herbaceous Buffer
391	Riparian Forest Buffer
472	Access Control
511	Forage Harvest Management
512	Forage & Biomass Plantings
516	Pipeline(to supply off-stream water for livestock)
528	Prescribed Grazing
580	Streambank and Shoreline Protection
584	Channel Stabilization
595	Pest Management
612	Tree and Shrub Planting
614	Water Facility (for off-stream livestock water)
643	Restoration and Management of Declining Habitats
647	Early Successional Habitat Development & Management
655	Forest Harvest Trails & Landings
666	Forest Stand Improvement
578	Stream Crossing
642	Well



- Open immediately as WHIP applications are accepted year-round.
- Must meet regular WHIP eligibility Criteria
- The 1st application window for ranking closes April 30th.
- Second ranking possible (May 30?)



High, Medium and Low:

- Private or Tribal land to be treated has Critical Habitat or in the Table 10 list of the SWWIFL recovery plan are considered as High.
- Lands that are not in the above category but are within the designated 100 year flood plain are considered Medium.
- All other private/Tribal lands are considered Low priority.



- Ranking criteria in Arizona should be developed by April 15.
- Coordination with ranking criteria in other states is not determined.
- Points for acres treated, quality of habitat, other species benefits, etc.



- Range-wide Biological Assessment (BA) to obtain a Biological Opinion (BO)**
- Take permit held by NRCS and include conservation measures for each practice.**
- BO cover range-wide (6 states)**



SWWIFL

- **Statewide SHA- developed by a partnership**
- **Other Landowner Agreements**
- **Follow-up Monitoring / Treatments**

Future Focus Species

- **Taking suggestions**
- **Multi-state**
- **Potential for reversing population declines**
- **Agreements already in Place**



